

ArcGIS Desktop 10.1 Education Edition (installation)

- Get the a license code from the IT-department via <https://bs.uib.no> (EVA123456789)
- Visit <http://www.esri.com/StudentEdition> to begin the process of activating and downloading your ArcGIS for Desktop Student trial software. (You might need to “Sign up for your FREE Esri Global Account)

(the software might also be downloaded from <https://tiinfo.uib.no/program> (ArcGis_Student - ArcGIS_Desktop_101_129796.exe)

Register for a Free Trial

You must create a FREE Esri Global Account to access this 1-year trial.

Not registered with us yet?

Sign-up for Your FREE Esri Global Account

Already have an account?

Login with Your Existing Esri Global Account

Username
st12345

Password
●●●●●●●●

Confirm Password
●●●●●●●●

E-mail Address
st12345@uib.no

Confirm E-mail
st12345@uib.no

Security Question(optional)
What city were you born in? ▼

Answer (optional)
Andeby

Your Account Information

First Name
Donald

Last Name
Duck

Organization
UiB

Address 1

City/Town

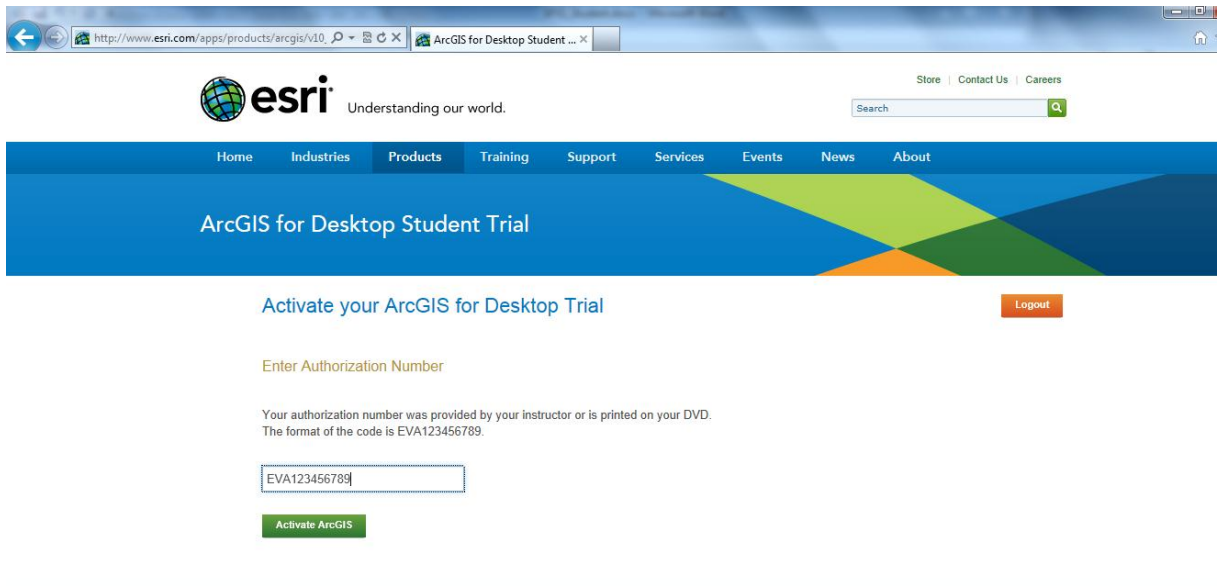
Country
Norway ▼

State/Province
- Select State or Province - ▼

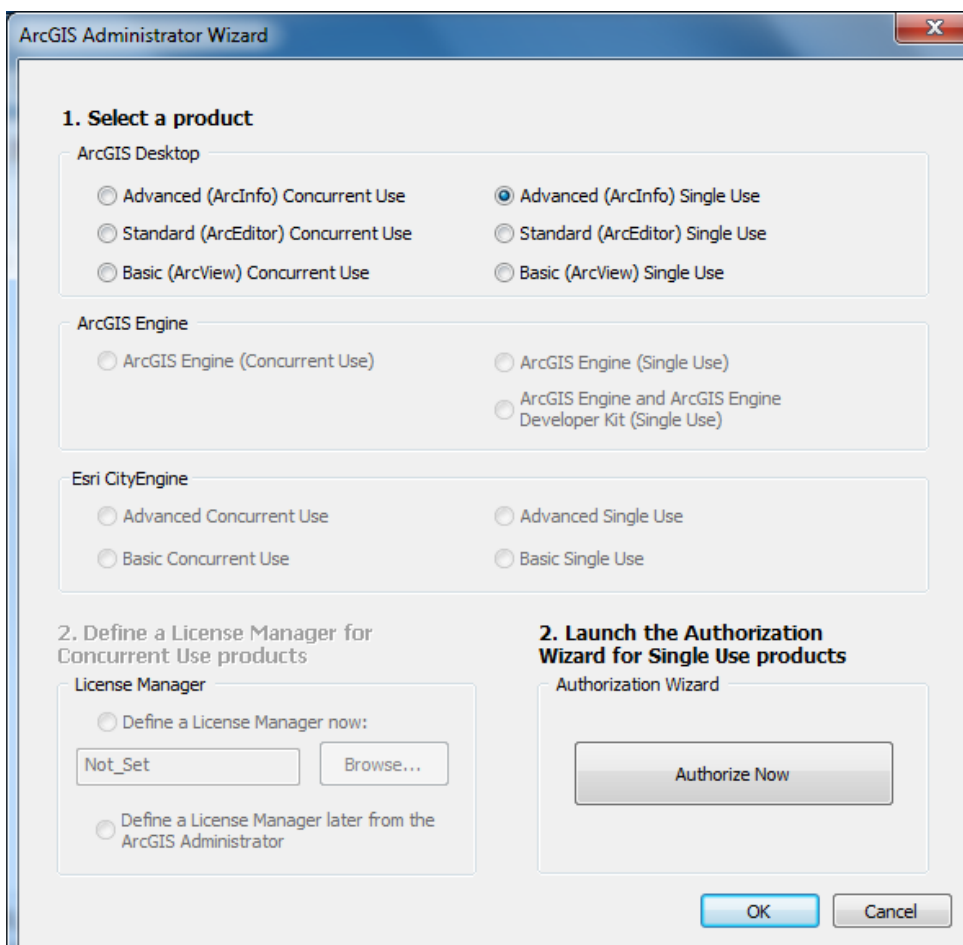
Zip/Postal Code

Start Your Free Trial

Start Your Free Trial



- Download and install ArcGIS_Desktop_101_129796.exe from <https://tjinfo.uib.no/program> (ArcGis_Student) (can also be downloaded from ArcGIS for Desktop Student Trial page)
- When the installation is complete you will get this form. Choose “Advanced (Arcinfo)Single use.
- Click “Authorize now”



Software Authorization Wizard

Authorization Options

You must authorize the software prior to use. Select from the options below.

Authorization Options

I have installed my software and need to authorize it.

I have already authorized the software and need to authorize additional extensions.

I have received an authorization file from Esri and am now ready to finish the authorization process.

Software Authorization Wizard

Authorization Method

Select the method you want to use to authorize the software.

Authorize with Esri now using the Internet.
(This automatic method is the easiest way to authorize. It requires an Internet connection.)

Authorize at Esri's website or by email to receive your authorization file.

Authorize your software from a local license server.

Software Authorization Wizard

Authorization Information

We will use the following information to verify our records and authorize your use of the software. (* required field)

*First Name:

*Last Name:

*Organization:

Department:

*Address 1:

Address 2:

*City:

*State/Province:

*Zip/Postal Code:

*Location:

*Phone Number:

*Email:

Comment:

Optional user-defined authorization description.

Software Authorization Wizard

Authorization information (continued)

We will use the following information to verify our records and authorize your use of the software. (* required field)

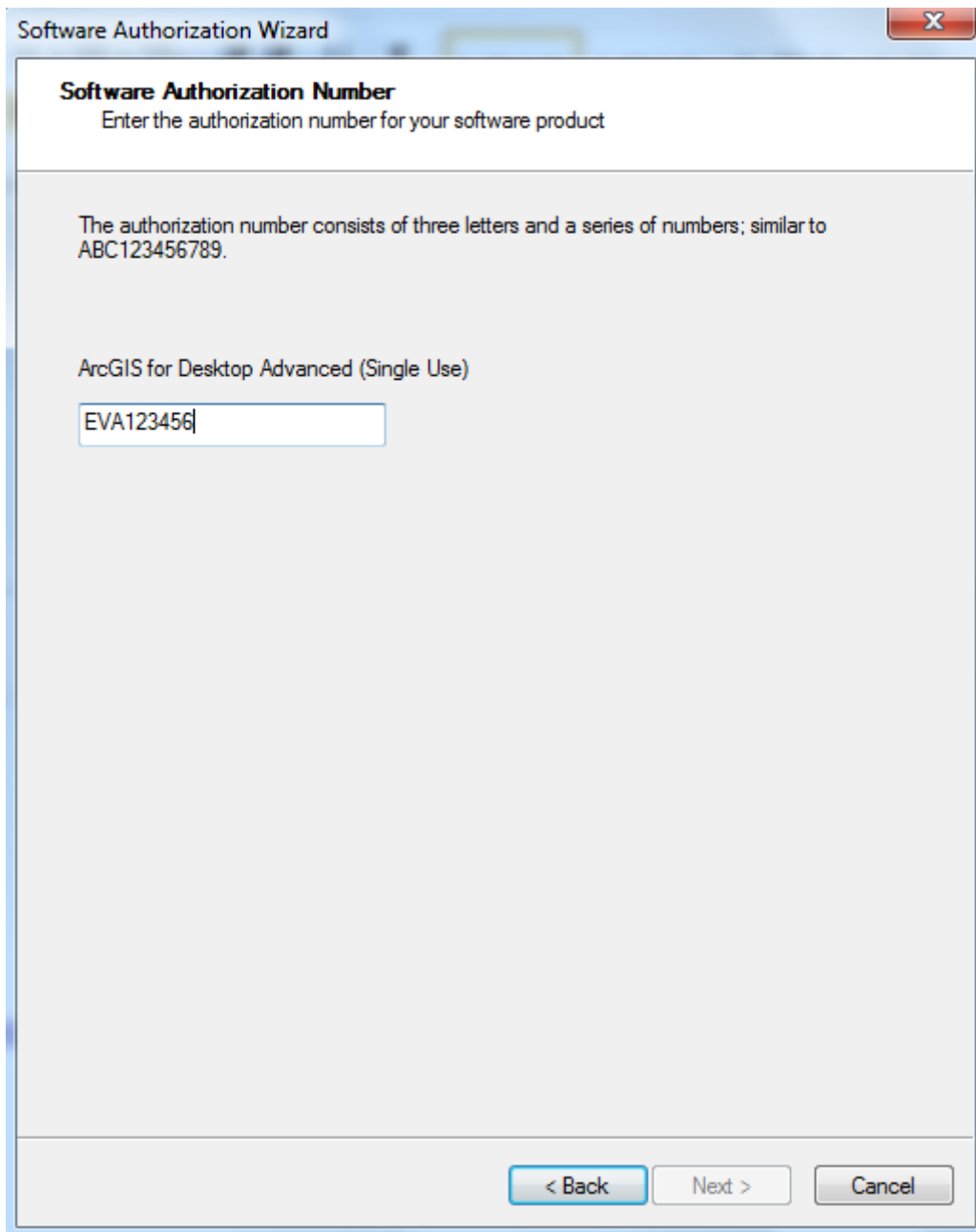
*Your Organization:

*Your Industry:

*Yourself:

The personal information you supplied is protected under Esri's privacy policy. If you want to view Esri's privacy policy, click the View button below.

Enter the software Authorization number that you have got via <https://bs.uib.no>
(the code that you have already activated via <https://www.esri.com/StudentEdition>)



The image shows a 'Software Authorization Wizard' dialog box. The title bar reads 'Software Authorization Wizard' with a close button (X) on the right. The main content area is titled 'Software Authorization Number' and contains the instruction 'Enter the authorization number for your software product'. Below this, a paragraph explains: 'The authorization number consists of three letters and a series of numbers; similar to ABC123456789.' The software product is identified as 'ArcGIS for Desktop Advanced (Single Use)'. A text input field contains the authorization number 'EVA123456'. At the bottom of the dialog, there are three buttons: '< Back', 'Next >', and 'Cancel'.

Software Authorization Wizard

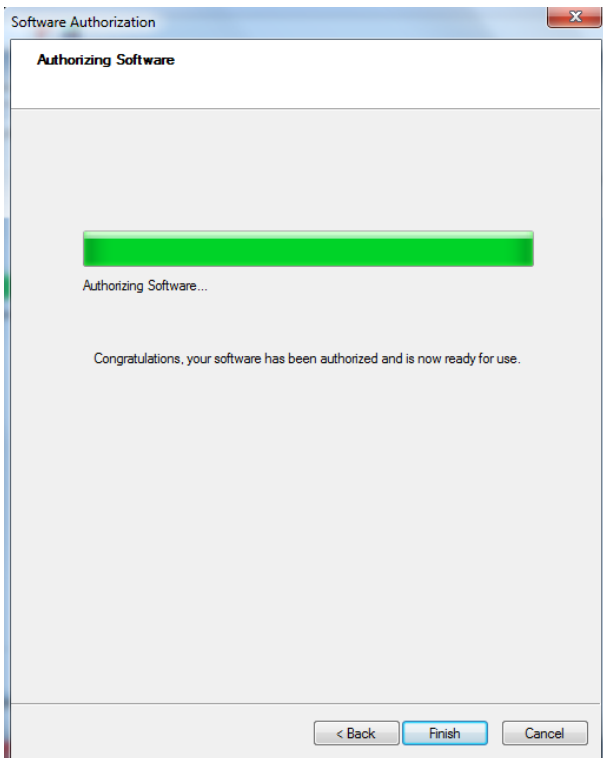
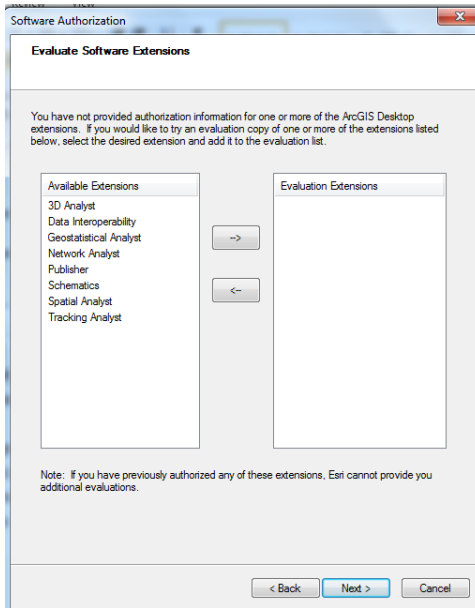
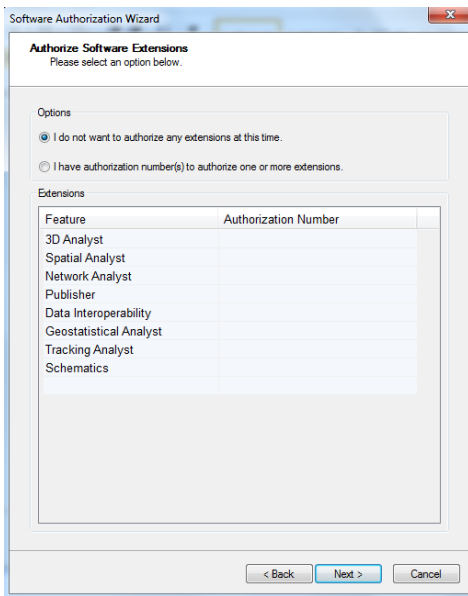
Software Authorization Number
Enter the authorization number for your software product

The authorization number consists of three letters and a series of numbers; similar to ABC123456789.

ArcGIS for Desktop Advanced (Single Use)

EVA123456

< Back Next > Cancel



- Press Finish

